

# Scrutiny Streets & Environment Sub- Committee Supplementary Agenda



**6. Presentation - Update on Grass Cutting (Pages 3 - 12)**

For the Sub-Committee to receive a short presentation to update on grass cutting in the borough.

Katherine Kerswell  
Chief Executive  
London Borough of Croydon  
Bernard Weatherill House  
8 Mint Walk, Croydon CR0 1EA

Tom Downs  
020 8726 6000  
[tom.downs@croydon.gov.uk](mailto:tom.downs@croydon.gov.uk)  
[www.croydon.gov.uk/meetings](http://www.croydon.gov.uk/meetings)

This page is intentionally left blank

Streets and Environment Sub-  
Committee  
July 2024

# Grounds Maintenance Service

The abundance of diverse parks and green spaces in Croydon is one of its greatest treasure.

Over 28% of the borough comprises public green open spaces (excludes Highways and Housing Land)



# Grounds Maintenance Service

The Grounds Maintenance Team are responsible for :-

- 127 Parks and Green spaces
- 94 Recreational play areas
- 30 Green spaces with Lakes and Ponds
- 75 Site of Importance for Nature Conservation
- 5 Nature Reserves
- 673 Highway Grass Verges
- Housing sites\*

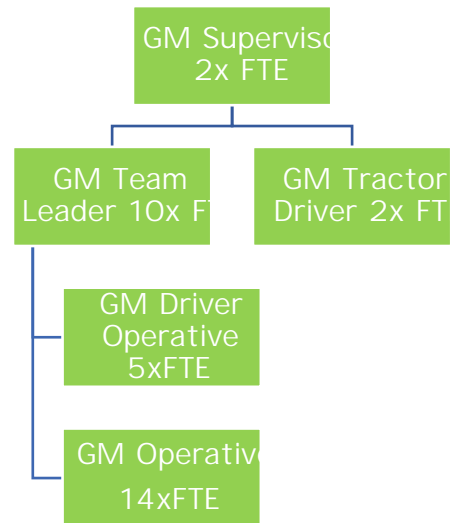


# Resource

In 2018 the Grounds Maintenance service provided by our contractor deployed **88** staff to undertake grass cutting and maintenance of our green spaces.

front line resource.

Currently, **29** front line operatives undertake the grass cutting service across the borough  
This allows for the daily deployment of 10 operational crews



# Community support

Our Parks and green spaces are highly valued by our residents and visitors.

Strategy and Development team to maintain the parks horticultural areas and wild meadow planting.

In addition to this we have over 800 Street Champions who undertake regular litter picking in our parks.

# Challenges

ensure that we prioritise available resource appropriately taking into account scheduled seasonal events .

## **Weather**

seeing an increase in the growing season requiring us to deploy resources for longer. This year the service has been heavily affected by weather. We cannot cut our parks and open spaces during periods of heavy rainfall. This is not unique to Croydon and in line with the national trend our neighbouring boroughs and Surrey County Council are all experiencing delays in the service.

## **Data**

have the functionality of real time reporting and tracking progress against a pre agreed schedule.

## **Machinery and Plant equipment**

replaced when the service was brought back in house in Jan 2019. As the equipment requires increased maintenance and repairs this causes down time and impacts on the service.



# Addressing the Challenges

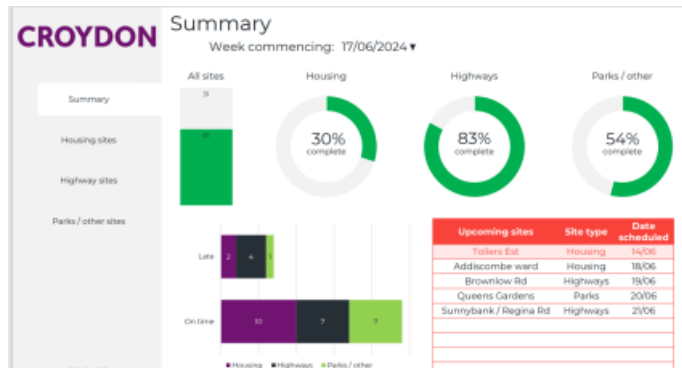
## Resource

borough are equally serviced we have commissioned contractors to undertake additional grass cutting services . This work is monitored by the Grounds Maintenance supervisors.

we will continue to deploy operational crews through to the end of the year supported by external contractors and agency staff.

## Data

will allow the service to produce an interactive map of the service showing when and wear grass cutting has been undertaken and the next scheduled date .



# Addressing the Challenges

## **New Machinery**

New equipment has been delivered and staff training is being undertaken, so it will be operational for the peak growing season in August.

# Questions

---

22 July 2024

