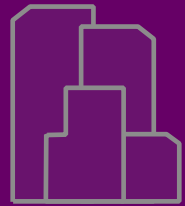


An aerial photograph of Croydon, showing a dense urban area with a mix of modern and traditional architecture. In the foreground, there are several prominent modern buildings, including a tall, colorful, patterned tower. The city is surrounded by green spaces and hills in the background. The text "DELIVERING THE GROWTH ZONE" is overlaid in the center of the image.

DELIVERING THE GROWTH ZONE

CROYDON
www.croydon.gov.uk

£5.25 billion regeneration initiative creating:



2.8 MILLION FT²
NEW GRADE A
OFFICE SPACE



WESTFIELD & HAMMERSON'S
STATE-OF-THE-ART RETAIL
AND LEISURE DESTINATION



21 CITY CENTRE
DEVELOPMENT OPPORTUNITIES



23,594
NEW JOBS



5,097
JOBS IN THE
CONSTRUCTION PHASE



28 NEW PUBLIC
SQUARES & SPACES



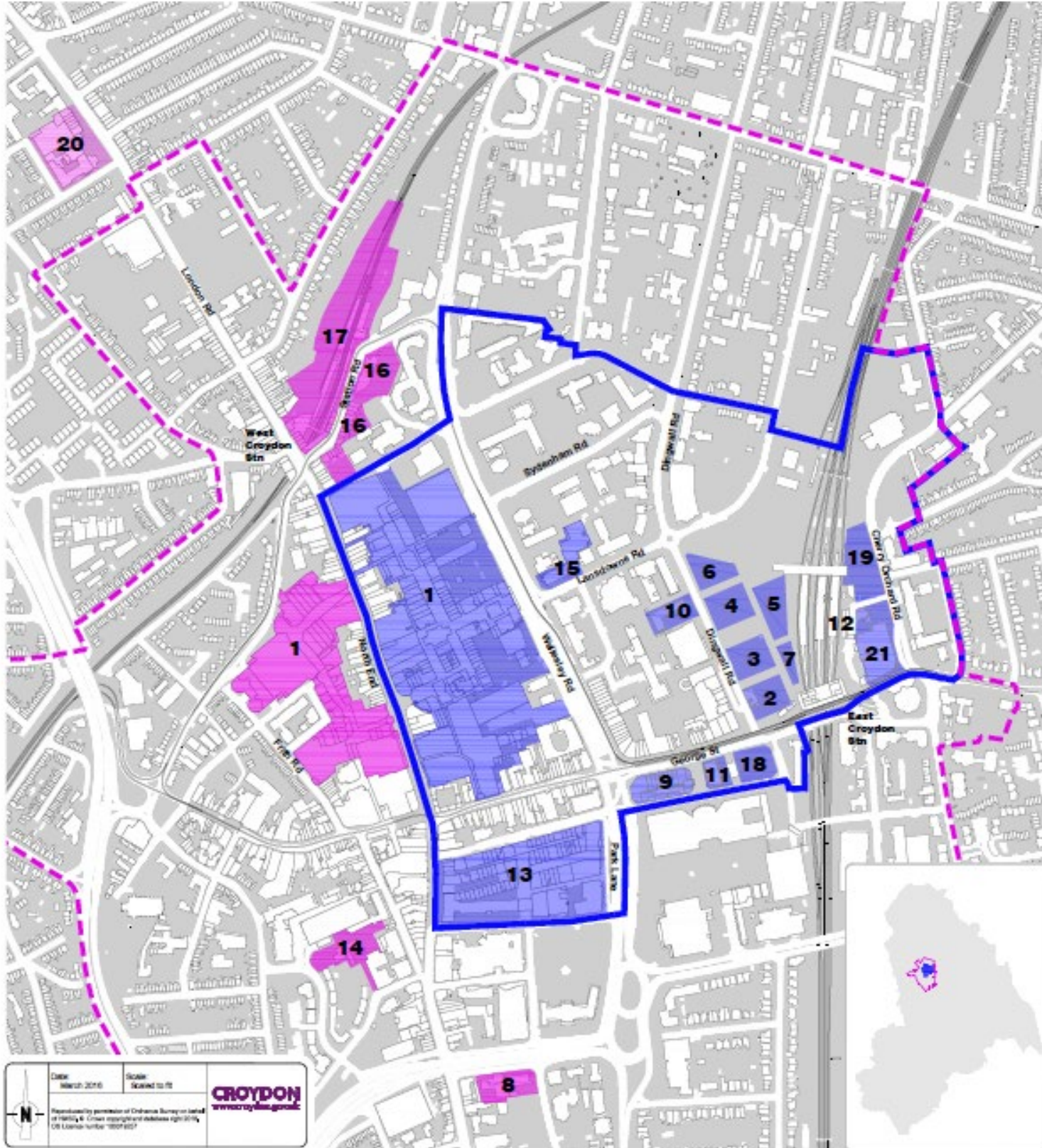
A NEW WORLD-CLASS
TRAIN STATION



circa 14,000
NEW HOMES



A REVITALISED AND VIBRANT
CITY CENTRE ENVIRONMENT



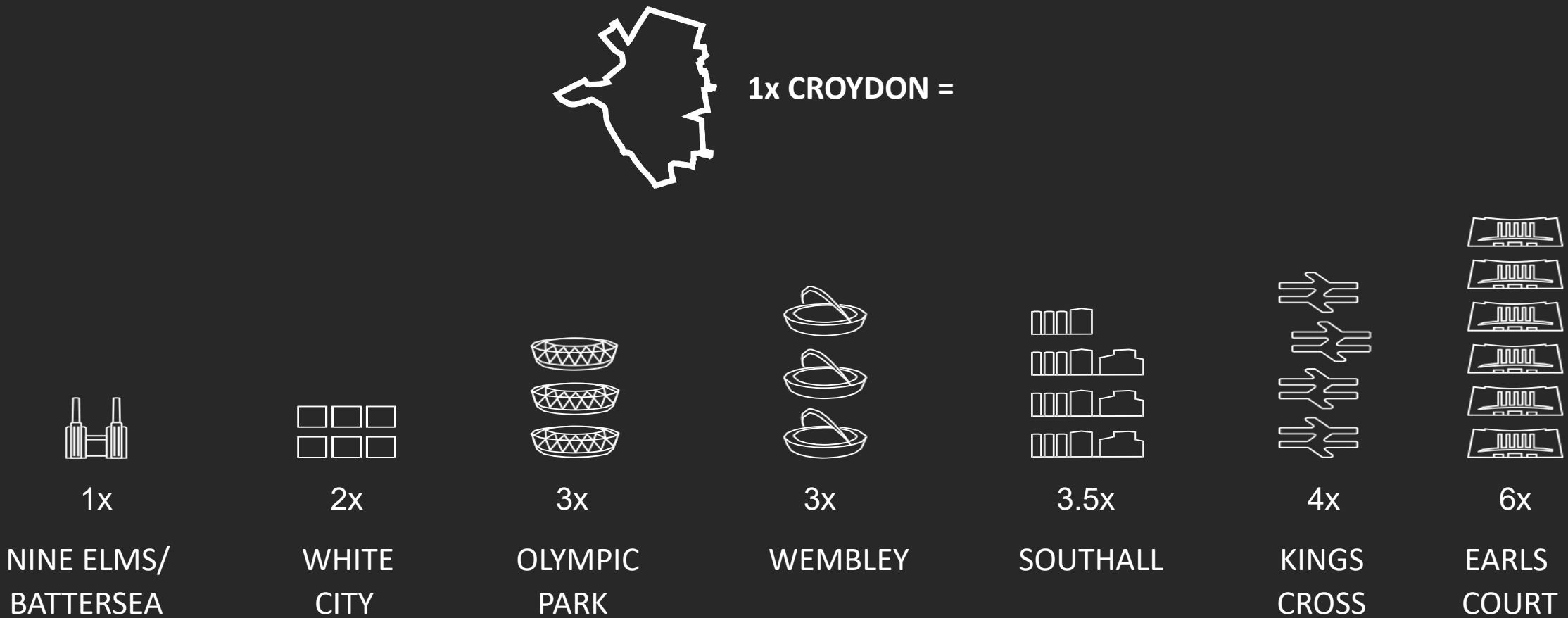
Key

- Growth Zone
- Ranked developments within the Growth Zone
- Opportunity Area (OA)
- Ranked developments within the OA
- Ranked developments outside the OA

Ranked developments:

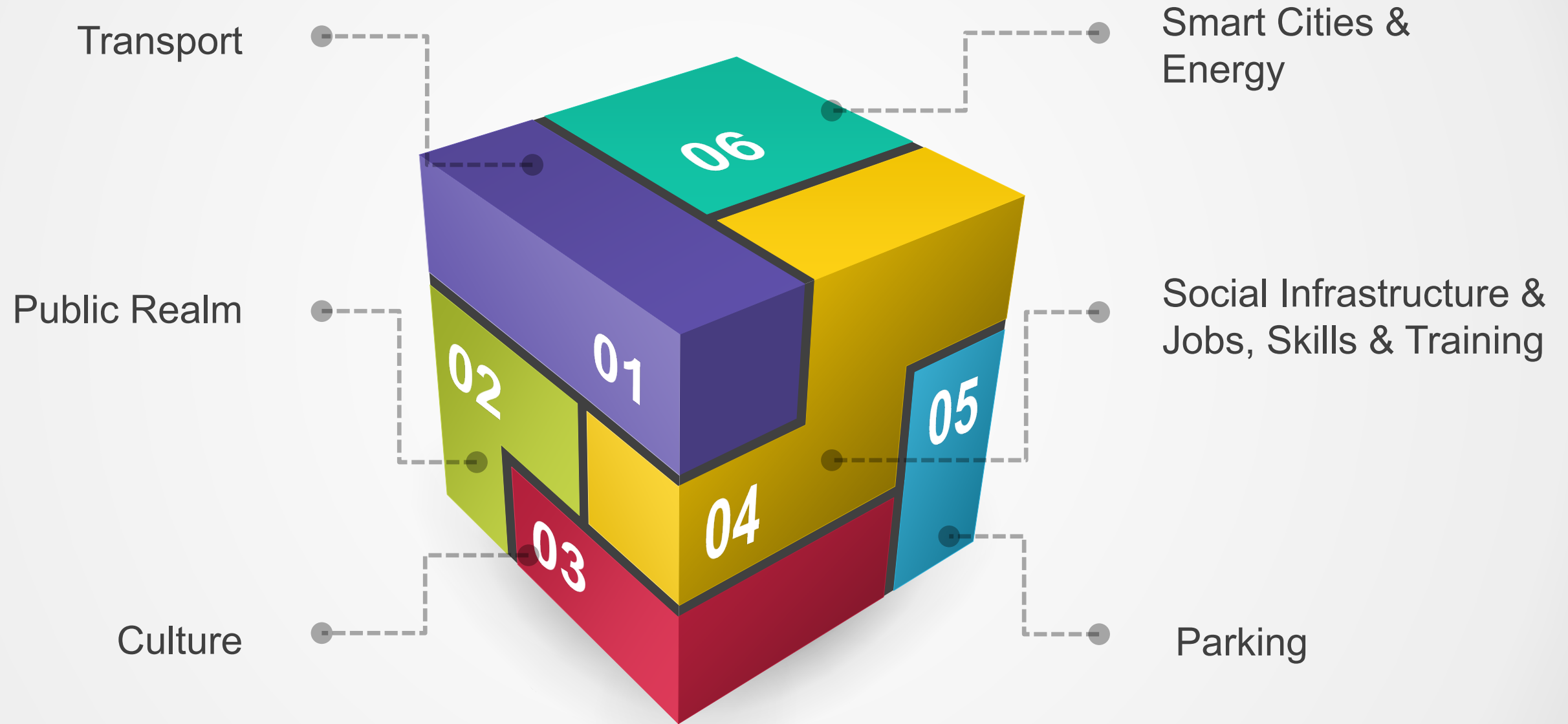
- | | |
|--------------------------------------|---|
| 1. Westfield/Hammerson Redevelopment | 13. Mid Croydon Masterplan (part of) Queen's Square |
| 2. Ruskin Square (B5) (Office) | 14. Exchange Square and Pumping Station |
| 3. Ruskin Square (B4) (Office) | 15. 1 Lansdowne Road |
| 4. Ruskin Square (B3) (Office) | 16. West Croydon Bus Station and St. Michael's Square |
| 5. Ruskin Square (B1) (Office) | 17. West Croydon Rail Station and Shops |
| 6. Ruskin Square (B2) (Office) | 18. Chroma, 100 George Street |
| 7. Ruskin Square Retail/Leisure | 19. Morello Tower |
| 8. Impact House | 20. Zodiac Court |
| 9. Suffolk House | 21. Royal Mail Sorting Office |
| 10. Jobcentre Plus | |
| 11. 96 George Street | |
| 12. Morello Office | |

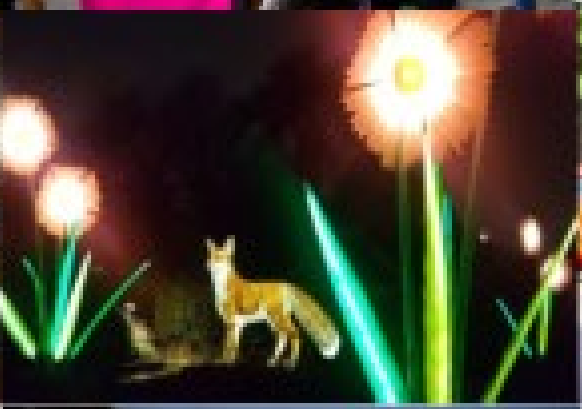
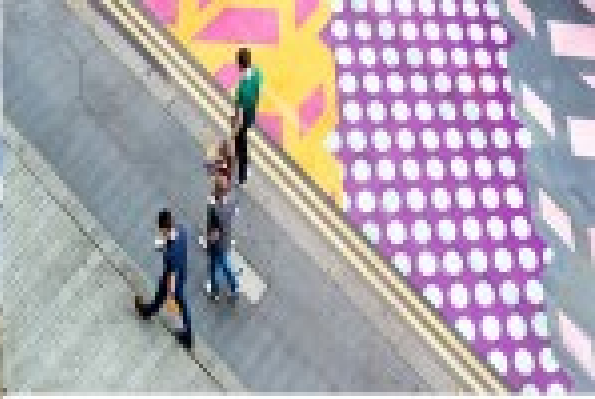
CAPACITY FOR GROWTH



All figures refer to the London Plan 2011 and stand for the comparison between the total Opportunity Area except: Olympic Park (Homesprovision) and Southall (total jobs, office space and homes). www.london.gov.uk/priorities/planning/london-plan

Croydon Growth Zone Themes





Looking to the future

Artist impression of what Croydon skyline may look like 2030



Croydon Growth Zone Themes

